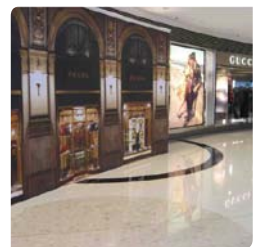


Isocrete K-Screed at Hong Kong's Six Star Shopping Mall



• Product: Isocrete K-Screed • Market Sector: Shopping Centres • Location: Hong Kong
• Client: Elements Shopping Centre • Date: 2007

A six-star shopping experience awaits visitors to Hong Kong's deluxe Elements Shopping Centre on Tsim Sha Tsui, located above the Kowloon Airport Express Station - from the high end designer brands on sale right down to the floor they will walk across.

Owners Sun Hung Kai Development and MTRC Joint Venture Development selected Flowcrete's Isocrete K-Screed based on its proven track record on similar projects but in particular at a local shopping centre in the territory where the high strength system was used to replace a conventional sand/cement floor screed that had failed after just a few months, destroying the final floor finish.

A total of 22,000m² of the fast-curing, heavy duty Isocrete K-Screed was installed over the two levels at Elements at thicknesses ranging from 20mm to 40mm, providing a firm footing for the final marble floor finish.

Isocrete K-Screed is a semi-dry cementitious screed incorporating proprietary additives to produce an early drying, high strength screed. Standard Isocrete K-Screed can be laid bonded, unbonded or floating (for weight saving and thermal or sound insulation) and may be used with proprietary underfloor heating systems.